

## Serving with Joy: A Perspective from KINDLE's Board of Directors

Serving on the KINDLE Board of Directors takes a particular set of skills: "The capacity to drink a lot of coffee and eat many wonderful desserts," according to Board member Leah Anderson, a family physician from Bozeman, Montana. Consuming caffeine and treats fuels the Board for their duties of casting vision, reflecting on and refining their performance as a Board and that of KINDLE leadership, and "celebrat[ing] all that KINDLE is."



Leah Anderson

Board president, Elvin Harms, an engineering physicist from Batavia, Illinois, has been on the KINDLE Board for nine years. When asked about his favorite part, he said, "We come from diverse backgrounds, but we're all passionate about Christ-like servant leaders." Both Leah and Elvin are active lay leaders



Elvin Harms

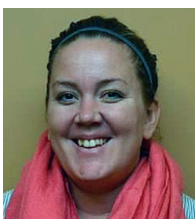
in their own congregations. In that vein, Leah noted that a dream she has for KINDLE involves expanding to "creatively approach servant leadership development of the laity," particularly in congregations who do not have a Director of Christian Education or parish education professional.

There is a strong sense of community among the Board members, as they go about their work and are nourished in their own Christ-like servant leadership journeys. Elvin explained that serving on the Board has allowed him to sit at the feet of, and learn from, those who model this servant leadership. "I've been grateful for the opportunity ... it's had an impact on my life I never would have expected." Similarly, Leah noted that the KINDLE Board is a source of encouragement for her in her day-to-day life and a vehicle for faith development.

Leah, who has served as a Board member for three years, said that it is her wish to "convey the passion, confidence, and hope that the KINDLE leadership and Board have for the ongoing ministry of KINDLE. This is God's work and the Spirit is alive and well in the comings, goings, serving, and served of KINDLE."

### The interviewers:

**Katy Munson is Director of Christian Education (Communications and Connections) at Mt. Olive Lutheran Church in Rockford, Illinois. She attended KINDLE: Recent Graduates in 2013.**



**Cori Woltmann, Youth and Children's Minister at Good Shepherd Lutheran Church in Owatonna, Minnesota, became a 2012-2014 Classic KINDLE Associate soon after attending 2010 KINDLE: Recent Graduates.**

### ANTICIPATED DATES:

April 23-26, 2017  
**KINDLE: Couples Event**  
Winter Park, CO

May 15, 2017  
**Deadline to Register for**  
**KINDLE: Recent Graduates**

June 13-15, 2017  
**Board of Directors**  
**Spring Meeting**  
Mundelein, IL

June 30, 2017  
**KINDLE's fiscal year end**

August 2017  
**Registration opens for**  
**2018-2020 Classic KINDLE**  
**& KINDLE: Finishing Well**

## KINDLE at the NADCE Conference

What joy for KINDLE to be part of Celebrating, Growing, and Praising with the 200+ Directors of Christian Education in Orlando for the NADCE (National Association of Directors of Christian Education) Conference January 4-6, 2017! KINDLE Associates, KINDLE: Recent Graduate participants, and other KINDLE supporters connected at the KINDLE Social Reception before the conference event began. KINDLE expresses appreciation to Sandy Wendelin, Linda Olsen, Rhonda Mohr, and Cornerstone for their sponsorship and support of this fine event.



**Enjoying fellowship and connecting with friends at the KINDLE Social.**

Connections were made with future KINDLE participants through a “Taste of KINDLE” pre-conference event and throughout the conference at the KINDLE exhibit. Sue Steege also led a “KINDLE Update” pre-conference event to share the new “Cultivating” language in the Strands, Practices, and Outcomes (SPOs) and to invite Associates to use some new KINDLE resources, such as the Servant Leader Journey Guides, in their congregations as they continue to foster and multiply Christ-like Servant Leaders.

KINDLE celebrated with Christine Eid (2004 Classic KINDLE Associate and KINDLE: Recent Graduates training team member), as she received the Master DCE Award. She is a true Christ-like Servant Leader who has poured into many others throughout her years of dedicated congregational ministry!



**Deb Arfsten (left) presents a gift to Christine Eid (right), Master DCE recipient.**

## KINDLE at Best Practices for Ministry



**David Johnson from Christ Lutheran, Brea, CA was one of the many volunteers at the KINDLE exhibit.**

KINDLE joined the fun and excitement that is Best Practices for Ministry at Christ Church Lutheran in Phoenix, Arizona, February 23-25, 2017. Best Practices for Ministry is a conference that lasts three days, takes 250 volunteers to run, and had 2,223 attendees this year. Oh, and did I mention that this conference is free!

Best Practices challenges the false dichotomy that ministries and conferences can either be a lot of fun *or* can be challenging and inspirational. For example, this is the only conference where the first person I saw was a man dressed up as Cookie Monster offering me a cookie (fun) and where I could also attend a session on Luther's theology of *homo incurvatus in se* (challenging and inspirational).

I enjoyed sharing how KINDLE breaks down the false dichotomy that you can't be a servant and a leader at the same time. KINDLE volunteers gave away many devotional books at its exhibit, in addition to having great conversations with church leaders, and opportunities to share how KINDLE fosters and multiplies Christ-like servant leaders.



**Tommy Moll serves as Director of Youth Ministry at St. Michael Lutheran Church in Ft. Wayne, Indiana. He is a 2012-2014 Classic KINDLE Associate. He was a volunteer at the KINDLE exhibit.**



## Register Online for KINDLE: Recent Graduates

Now is the time to register for the next **KINDLE: Recent Graduates** event to be held September 18-21, 2017 at the University of St. Mary of the Lake Conference Center in Mundelein, Illinois. This four-day initiative is designed for commissioned workers and practitioners during their first three years of ministry. Go to [kindleservantleaders.org](http://kindleservantleaders.org) and look for the registration link. The cost is \$450. Be sure to register by **May 15, 2017!**

## Board of Directors Winter Meeting Highlights

Under fair skies and on snow-less grounds, KINDLE's Board of Directors met at St. Mary of the Lake Conference Center in Mundelein, Illinois on February 27-28, 2017. Highlights included:

- Celebrating Les Stroh's five and one-half year tenure as KINDLE's Executive Director.
- Welcoming warmly new Board member Mary Stafford, Director of Education Ministries at Brookfield Lutheran Church in Brookfield, Wisconsin. Mary is also a Circle Coach for the current Classic KINDLE Learning Cycle.
- Discussing further the restructuring of KINDLE's Executive Leadership positions. The Board appreciates Michelle Pavasars' willingness to serve as KINDLE's Interim Executive Director at this time.
- Creating Board member Growth Plans using the newly updated Cultivating Faith Servant Leader Journey Guides.
- Electing Jim Bradshaw to the Board of Directors. Jim is Assistant to the President for Educational Services at the Kansas District of the Lutheran Church--Missouri Synod in Topeka, Kansas. He is also a current Associate in the KINDLE: Finishing Well Learning Cycle.
- Addressing KINDLE's financial future and funding plans.

### *Living Legacy Fund Focus: William Cullen*

Throughout his career, serving both in congregational and university settings, Dr. Bill Cullen has modeled and nurtured in others an attitude of Christ-like servant leadership. A 2009 Classic KINDLE Associate and member of the design team for the KINDLE: Finishing Well learning initiative, Bill noted that KINDLE reinforces many principles he has known and practiced in his years of professional ministry and "helped to package things" in a way that makes their delivery more effective.

As a way to honor Bill and his ongoing leadership in Christian education, a Living Legacy was established in 2010. Contributions to the William Cullen Living Legacy may be made by visiting [kindleservantleaders.org/donate](http://kindleservantleaders.org/donate).



**Les Stroh presented a crystal KINDLE flame to Bill Cullen in June 2016.**

## Ways You Can Financially Support KINDLE

### **Consider these options as you think about a gift to KINDLE:**

- Offer a monthly gift of \$10, \$15, or more, using a regular draw from your bank or through the process offered by KINDLE at the "Donate" tab at [kindleservantleader.org](http://kindleservantleader.org).
- If you are a Thrivent member, your "Thrivent Choice Dollars" may be designated to KINDLE. For more information, go to [Thrivent.com](http://Thrivent.com) or call 1-800-847-4836.
- Talk to your family and friends and ask them to place KINDLE in their stewardship plans.
- Ask your congregation to offer a monthly or yearly gift in support of this ministry.
- Sign up for **AmazonSmile** at [smile.amazon.com](http://smile.amazon.com) and choose KINDLE as the beneficiary of this donation program. Amazon will donate 0.5% of the price of your eligible purchases to the charitable organization of your choice.

All gifts are valuable to KINDLE and are deeply appreciated.

Gifts to KINDLE may also be mailed to **KINDLE, 8608 Poplar Bridge Curve, Bloomington, MN 55437**.

IRA owners who must take a required minimum distribution (RMD) in 2017 can avoid some or all of the resulting income tax liability by donating a portion of the IRA to your preferred charitable organizations such as KINDLE. A qualified charitable distribution (QCD) can help reduce income taxes, may help minimize estate taxes, and can fulfill your philanthropic desires. You can make tax-free transfers of up to \$100,000 directly from your IRA to qualified charities. Please consider KINDLE for your QCD. For more information, please contact Michelle Pavasars, Interim Executive Director, at [michelle@kindleservantleaders.org](mailto:michelle@kindleservantleaders.org).



Fostering & Multiplying  
Christ-like Servant Leaders

KINDLE  
8608 Poplar Bridge Curve  
Bloomington, MN 55437

**ADDRESS SERVICE REQUESTED**

**KINDLE**  
**Karpenko Institute for**  
**Nurturing and Developing**  
**Leadership Excellence**

**EMAIL**  
Diane@KINDLEServantLeaders.org

**VOICEMAIL**      **FAX**  
952-657-5664      952-657-5214

**WEBSITE**  
KINDLEServantLeaders.org

**MISSION**  
KINDLE fosters and multiplies  
Christ-like servant leaders  
to enhance the ministry  
of congregations, in their  
communities and the world.



**Please Pray For:**

- Wisdom for those considering registering for 2017 KINDLE: Recent Graduates.
- 2016-2018 Classic KINDLE Associates, as they lead the Servant Leader Gathering “Christ-like Servant Leadership in the Home” this spring.
- 2016-2018 KINDLE: Finishing Well Associates, as they launch Servant Leader Journey clusters in their congregations this spring.
- The Board and the Executive Director Search Committee, as they discern the best leadership model for KINDLE’s future.
- KINDLE: Couples participants, as they gather April 23-26, 2017 in Winter Park, Colorado.

**Please Give Thanks For:**

- Mary Stafford and Jim Bradshaw, KINDLE’s new Board members, and the valuable contribution they will be to the Board.
- The ongoing impact of the Thrivent Financial Choice Dollars on KINDLE’s program initiatives.
- The marvelous generosity of donors who continue to support KINDLE’s ministry.
- Congregations who underwrite expenses of Associates as they attend KINDLE events.
- KINDLE’s committed staff and volunteers and their many years of service to the ministry of KINDLE.
- KINDLE’s ongoing positive relationship with University of St. Mary of the Lake Conference Center and their training and meeting accommodations.

**BOARD OF DIRECTORS**

Leah Anderson, Jim Bradshaw, Carsten Falkenberg, Elvin Harms, Jr. (President), Rick Herman, Sandy Jett, Michele Karpenko (Secretary), David Rahberg (Vice President), Mary Stafford

**KINDLE STAFF**

Michelle Pavasars (Operations Director and Interim Executive Director), Diane Schuessler (Operations Coordinator)

**EDITORIAL TEAM**

Christine Eid, Michael Harvey, Tommy Moll, Katy Munson, Michelle Pavasars, Diane Schuessler, Cori Woltmann

